



## TE Connectivity Product & Application Guide

TE Connectivity (TE) is a technology leader in the world's fastest growing markets, helping connect power, data and signal in everything from automotive and aerospace to broadband communications, consumer, energy and industrial applications. By helping our customers meet the need for greater energy efficiency, ever-increasing productivity and faster, more reliable data, TE's market-defining technologies and engineering expertise are setting the pace for the future of connectivity. This product and application guide will help you to easily identify the products most suitable for the applications you support and share our expertise in these industries that reinforce our position as a technology leader.

Insert TE Authorized  
Distributor Logo Here



Authorized Distributor



Go to [te.com](https://te.com)  for further information

		Aerospace, Defense & Marine			Alternative Energy		Appliances			Automation & Control			Automotive		
		Avionics	Defense	Marine	Wind	Solar	White Goods	Electric Motors	Power Tools	Motion & Drives	Industrial Communications	Power Distribution Systems	Body & Chassis	Infotainment	Powertrain
	Input/Output	●	●	●	●	●	●			●	●	●	●	●	●
	Power				●	●	●	●	●	●	●	●			
	RF & Coax	●	●	●							●			●	
	Board-to-Board	●	●	●							●			●	
	Fiber Optics	●	●	●							●			●	
	EMI/RFI Filters	●	●	●		●						●	●	●	
	Cable/Wire Applied	●	●	●	●	●	●	●	●	●	●	●	●	●	●
	Terminals & Splices	●	●	●	●	●	●	●	●	●		●	●	●	●
	Wire, Cable, & Cable Assemblies	●	●	●		●	●	●	●	●	●	●	●	●	●
	Tubing & Harnessing	●	●	●	●	●	●	●	●	●		●	●	●	●
	Identification	●	●	●	●	●	●	●	●	●	●	●	●	●	●
	Terminal Blocks	●	●	●			●	●	●			●			
	Passive Components					●	●	●	●				●	●	●
	Relays, Switches & Sensors	●	●	●	●	●	●	●	●	●		●	●	●	●
	Circuit Protection	●	●	●	●	●	●	●	●			●	●	●	●
	Card Products & Sockets														
	Application Tooling	●	●	●	●	●	●	●	●	●	●	●	●	●	●



Commercial Transportation			Consumer Electronics			Data Communications			Intelligent Buildings			Lighting			Medical		
High Voltage	Low Voltage	Signaling & Rail Control	Personal Computers	Mobile Devices	Home Entertainment	Data Center	Communications	Wireless	Security	Elevators & Escalators	HVAC	Digital Signage	Indoor Lighting	Architectural Lighting	Imaging	Diagnostic	Surgical & Interventional
		●	●	●	●	●	●	●	●		●	●	●	●	●	●	●
						●	●	●		●	●	●	●	●	●	●	
		●	●	●	●	●	●	●	●			●			●	●	●
		●	●	●	●	●	●	●	●						●	●	●
			●		●		●		●							●	●
●	●	●	●	●	●	●	●	●	●	●	●	●	●	●	●	●	●
●	●	●	●		●		●		●	●	●	●	●	●	●	●	
●	●	●	●		●	●	●			●	●	●	●		●	●	●
●	●	●	●	●	●		●		●	●	●				●	●	●
●	●	●	●	●	●	●	●	●	●	●	●	●	●	●	●	●	●
●	●	●					●		●	●	●	●	●	●	●	●	●
●	●	●	●	●	●	●	●	●		●	●	●	●	●	●	●	●
		●	●	●	●	●	●		●	●	●				●	●	●
●	●	●				●	●	●		●	●	●	●	●	●	●	●
			●	●	●	●	●	●		●			●		●	●	●
●	●	●	●	●	●	●	●	●	●	●	●	●	●	●	●	●	●

Insert TE Authorized Distributor Logo Here

**Aerospace, Defense & Marine**



- Applications
- Commercial aerospace
  - Avionics
  - Military aviation
  - Ground weapons & vehicles
  - Offshore oil & gas
  - Civil marine
  - Sub-sea

TE consistently delivers value and performance with increasingly smaller and lighter weight solutions for customer applications in the Aerospace, Defense & Marine industry. By applying our materials science technology and other core capabilities, TE provides:

- Component design and low cost, turn-key finished assemblies incorporating higher speeds, greater bandwidths and higher current or voltage technology challenges
- Electronic systems and components designed for rugged applications and global approval organizations
- Products that meet the most stringent quality and performance standards of OEMs, military, and aerospace authorities



CeeLok FAS-T connectors



KILOVAC CAP202 contactors



Raychem spin lock variable angle backshells



High temperature heat shrink tape



C-Wrap side entry repair sleeves



MULTIGIG RT 2-R connectors

**Alternative Energy**



- Applications
- Solar generation
  - Wind generation
  - Hydro & fossil generation
  - Nuclear generation

As a manufacturer of electronic components and solutions for alternative energy TE's focus on innovation and quality makes us a leader in this complex market. For over 60 years, TE has worked with industry leaders to develop quality engineered solutions providing our customers with:

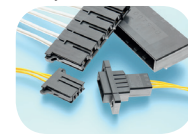
- Economically manufactured products to maintain aggressive cost structures
- Connectors designed to support system reliability
- New and innovative ways to implement technically advanced products
- Expertise in materials science, product design and process engineering



SOLARLOK Breeze junction box



Circular plastic connectors (CPC)



Dynamic Series connectors



Solar cables



SOLARLOK PV4 connectors



Identification labels

**Appliances**



- Applications
- Washers & dryers
  - Refrigeration
  - Water heaters
  - HVAC

Electric motors, reliable heating elements and intuitive user interfaces are just the start of the solutions TE supports in order to meet the daily demands of home appliances. TE's high quality appliance interconnects, custom connectors, relay and circuit protection devices help:

- Reduce energy and water usage while improving system performance
- Meet RoHS and other recyclability standards with our broad material offering
- Improve household appliance performance and efficiency incorporating smart grid technology



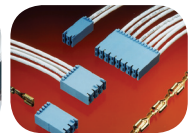
Softshell connectors



Economy Power Series connectors



FASTON terminals & splices



RAST connectors

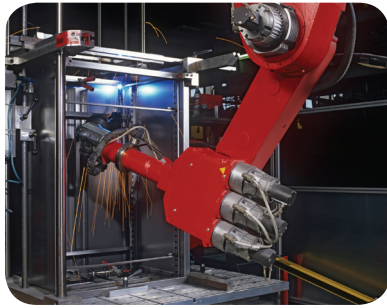


Power & Signal Double Lock connectors



AMPLIVAR magnet wire terminals

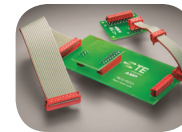
Automation & Control



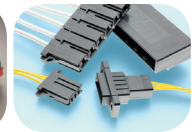
Applications  
 Industrial controls  
 Human machine interface  
 Motion & drives  
 Material handling  
 Power distribution  
 Industrial communication

As production environments become increasingly automated and decentralized, even the smallest connections are mission-critical. TE delivers innovative solutions to connect, power and control every aspect of production—from machinery to process optimization on the circuit board to the harshest working environments. TE solves your connectivity challenges with solutions that:

- Allow professional decentralization within the production facility, making it easier to retrofit machine architecture
- Make installation and maintenance time transparent, while reducing machine downtime and scrap
- Provide a high level of data integrity for real-time industrial data communication
- Are customized to your industrial design challenges



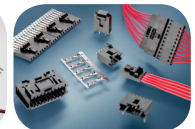
Micro-MaTch connectors



Dynamic Series connectors



PIDG & SOLISTRAND terminals & splices



AMPMODU connector family



Circular plastic connectors (CPC)



Industrial mini I/O connectors

Automotive



Applications  
 Body & chassis  
 Hybrid & electric mobility  
 Infotainment  
 Powertrain  
 Sensor  
 Safety & security

TE's innovative automotive technologies support advanced safety systems, highly integrated engine controls, power management systems, infotainment applications, sensors and hybrid and electric vehicles. Our broad product offering makes TE a one-stop shop for automotive solutions. As a leader in automotive technology, TE's connector systems are designed to:

- Meet the unique requirements for chassis system electronics used for seat adjustments and steering angle sensors
- Support dashboard displays that monitor the safety, comfort and overall performance of the vehicle
- Manage the fuel consumption, emissions and safety requirements of the modern engine environment
- Provide fuel delivery and interconnect innovation across the infrastructure of hybrid and electric vehicles



Heavy Duty Sealed Connector Series



High Speed Data (HSD) Connectors



Hybrid electric vehicle charging systems



F7 plug-in latching relays



Stripline RF connectors



NanoMQS terminators & connectors

Commercial Transportation



Applications  
 Trucks & buses  
 Construction & agriculture  
 Recreational vehicles  
 Motorcycles

Sophisticated commercial vehicle designs demand highly innovative interconnect solutions. TE is committed to exceeding industry standards with our high-performance commercial vehicle products and technologies that are time-tested and designed to last. These products support:

- Field dependability in rugged, high vibration applications that are J2030 compliant
- Sealed solutions to help protect connections from dust, dirt, salt spray, vibration and chemicals
- Simple interconnect designs making them easy to apply and service
- Motorcycle solutions with high vibration resistant, cost effective and small form factor interconnect designs



3D hall sensors



RTP devices



AMPSEAL 16 connectors



Fuse & relay holders



High Speed Data (HSD) connectors



Infotainment cable assemblies

Consumer Electronics

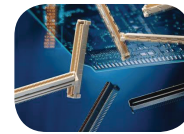


Applications

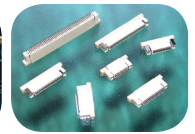
- Mobile devices
- Personal computers
- Home entertainment

The demanding and growing needs of the consumer electronics industry are trending toward smaller, lighter and thinner devices with improved portability. TE is on the forefront of the consumer industry with our:

- Latest technology advancements keeping ahead of changing consumer expectations
- Innovative product offering designed to withstand high vibration applications
- Broad portfolio of compact interconnects that help manufacturers across all markets develop smaller, lighter and thinner devices with improved portability



0.8mm Free Height (FH) connectors



FPC connectors



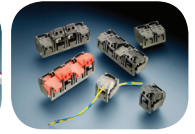
USB 3.0 connectors



HDMI connectors



AMP CT & AMP Mini CT connectors



Pivot connectors

Data Communications

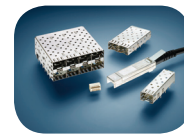


Applications

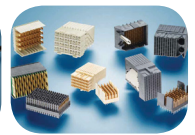
- Switches, routers & storage
- Optics & optical equipment
- Access equipment
- Smart grid communications
- Cable management
- Data center
- Wireless infrastructure

The dramatic increase of information flow across the globe has driven the need for communication equipment and architectures that support higher density and faster speeds. TE's product solutions support these trends with our:

- 10- to 25- Gbps and beyond connectors and cables for faster data rates
- Ability to drive standards as a leader in the industry
- Expertise in signal integrity for excellent performance
- Proven engineering innovation
- Broad product portfolio of copper and optic connectivity product solutions for every level of data communication



SFP+ connectors



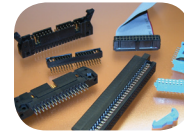
Z-PACK connectors



AMPLIMITE D-Sub connectors



Modular jacks



AMP-LATCH connectors



QSFP+ connectors

Intelligent Buildings

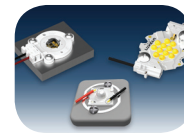


Applications

- Elevators & escalators
- Lighting
- Security
- Environmental comfort (HVAC)

As today's buildings become increasingly efficient and connected, TE works to solve complex connectivity challenges. Our products link power and data on every floor of the building, from environmental and illumination controls, to safety, people flow, convenience and service equipment, delivering greater control and comfortable living and working spaces. TE's latest product and manufacturing technologies support intelligent building applications with:

- Early involvement programs that provide a system approach to ensure component compatibility and a reduction in development cycles
- Product development teams dedicated to advance your designs with interconnect, protection and passive products
- Experienced retrofit teams to help bring equipment into compliance with strict emissions



Solderless LED sockets



Medium P series power entry modules



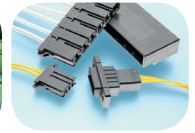
Universal MATE-N-LOK Connectors



RZ relays



Terminal blocks



Dynamic Series connectors

Insert TE Authorized Distributor Logo Here

Lighting

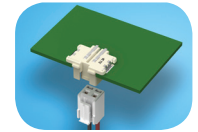


Applications

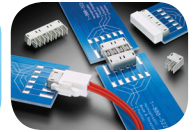
- Emergency lighting
- Street & stadium lighting
- Digital signage
- Indoor lighting
- Commercial refrigeration
- Architectural lighting

TE is at the forefront in the development of next generation lighting solutions that accelerate lighting manufactures' transition from traditional light sources to new LED lighting fixtures. From outdoor luminaires to commercial refrigeration, innovation in lighting is taking advantage of broad-based technological progress. Our knowledge of the lighting industry and experience in interconnect design support the development of lighting applications with our:

- Commitment to energy saving solutions
- Broad range of product innovations to support easy assembly in space constrained applications
- Environmentally friendly materials supporting emissions reduction
- Voltage and current capabilities meeting industry standards



High power inverted through-board SMT Connectors



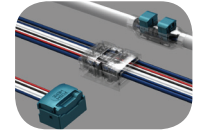
Hermaphroditic connectors



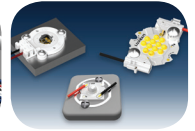
SlimSeal SSL connectors



NECTOR S power system



CoolSplice connectors



Solderless LED sockets

Medical



Applications

- Imaging
- Diagnostic
- Surgical
- Therapeutic
- Interventional

TE assists medical OEMs with our value added product development experience creating products with our state of the art manufacturing technologies and processes. Our world-class engineering, manufacturing, testing and distribution capabilities and proven strengths include:

- Industry-leading fine wire manufacturing and high-performance tubing in support of trends toward minimally invasive catheter solutions
- Innovative designs and user-friendly ergonomics supporting easy, intuitive user handling
- Design of single use products manufactured in clean room environments
- Sterilizable, reusable assemblies incorporating high performance power and digital cable



Micro coax for catheters



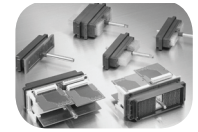
Medical tubing



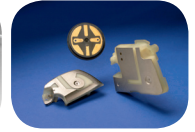
Surgical cable assemblies



Ultrasound cable assemblies



M-ZIF & TC ZIF connectors



3D-MID & stamped components

This space can be used for custom distributor banner

Insert TE Authorized  
Distributor Logo Here



*Authorized Distributor*

**Distributorwebsite.com**  
**1-XXX-XXX-XXXX**

**te.com**

© 2013 Tyco Electronics Corporation, a TE Connectivity Ltd. company. All Rights Reserved.  
AMP, AMPLIMITE, AMPLIVAR, AMPMODU, AMPSEAL 16, CeeLok FAS-T, CoolSplice, C-Wrap, FASTON,  
KILOVAC, MATE-N-LOK, Micro-MaTch, MULTIGIG RT, NECTOR, PIDG, Raychem, SOLARLOK, SOLARLOK  
Breeze, SOLISTRAND, Z-PACK, TE Connectivity and the TE connectivity (logo) are trademarks.  
Other logos, product and/or company names might be trademarks of their respective owners.

9-1773700-4 CIS CM 04/2013

While TE has made every reasonable effort to ensure the accuracy of the information in this brochure, TE does not guarantee that it is error-free, nor does TE make any other representation, warranty or guarantee that the information is accurate, correct, reliable or current. TE reserves the right to make any adjustments to the information contained herein at any time without notice. TE expressly disclaims all implied warranties regarding the information contained herein, including, but not limited to, any implied warranties of merchantability or fitness for a particular purpose. The dimensions in this catalog are for reference purposes only and are subject to change without notice. Specifications are subject to change without notice. Consult TE for the latest dimensions and design specifications.